

4 Giving directions

Date: _____

Grammar Station

We can use imperatives to give directions.

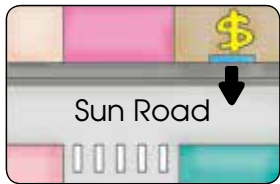
We start an imperative sentence with a verb. We do not change the verb form.

e.g. **Go out of** the hotel.

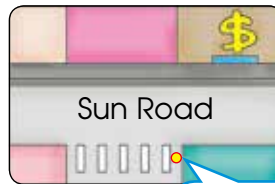
Go / Walk straight ahead.

Walk across / Cross the road. **Turn right / left into** Queen Street.

A Draw arrows on the pictures according to the directions.

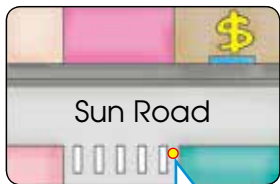


e.g. Go out of the bank.



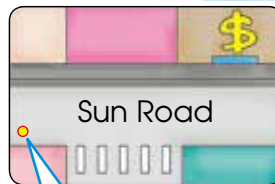
1. Turn right into Sun Road.

You are here.



2. Walk across the road.

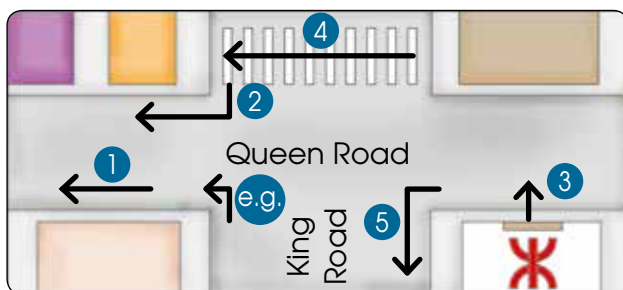
You are here.



3. Walk straight ahead.

You are here.

B Look at the arrows on the map and fill in each blank with one word.



e.g. Turn left.

1. Walk _____.

2. Turn _____ into Queen Road.

3. Go _____ the MTR station.

4. _____ the road.

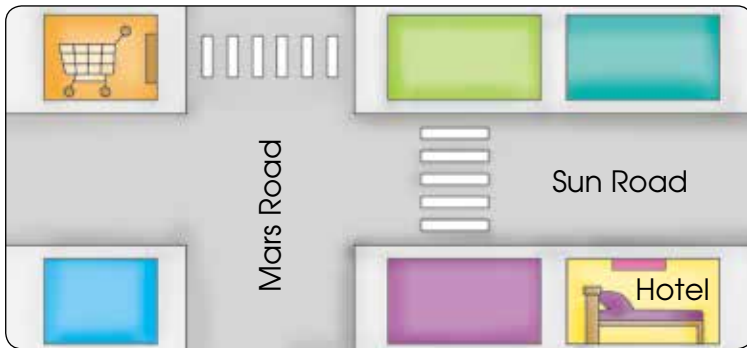
5. _____ King Road.

C There is one mistake or one missing word in each line. Circle the mistake or put '∧' in the correct place and write the correct word in the blank.

Let me tell you how to get [∧] the post office.
 Go out the MTR station.
 Turn left in Silver Street.
 Goes straight ahead.
 Then right into Gold Street.
 Walking across the road.
 The post office are next to the church.

- e.g. _____ to _____
1. _____
 2. _____
 3. _____
 4. _____
 5. _____
 6. _____

D Ella and her family are at the hotel. They are asking the manager for some directions. Look at the map and complete the dialogue with the given words.

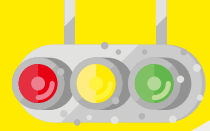


- turn left walk
 go out of cross
 straight ahead go
 turn right into

Ella: How do I get to the supermarket?

Manager: (1) _____ the hotel. Turn left and walk
 (2) _____. Turn right and (3) _____
 across Sun Road. (4) _____ and go straight
 ahead. (5) _____ Mars Road.
 (6) _____ straight ahead and
 (7) _____ Mars Road. The supermarket
 will be right in front of you.

Revision 1 (Units 1 - 9)



Date: _____

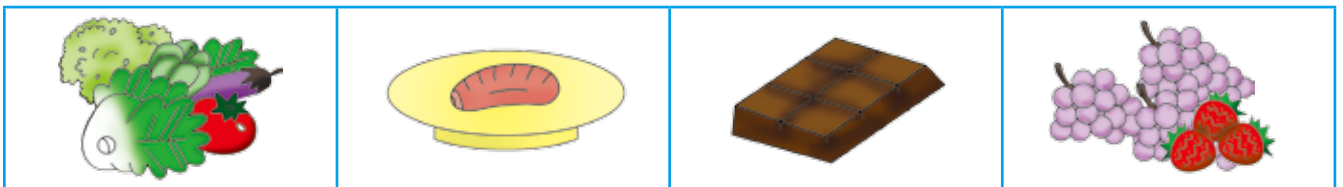
A A doctor is talking to Ben. Look at the table and complete the dialogue with 'a lot of / a few / a little / fewer / less / more'.

(Fewer / less / more, a lot of / a few / a little)

Ben usually eats:



Doctor's advice:



Doctor: What do you usually eat?

Ben: I usually eat (1) _____ sausages.

Doctor: You need to eat (2) _____ meat. Do you eat vegetables every day?

Ben: I don't eat them everyday but I eat (3) _____ lettuce sometimes.

Doctor: You need to eat (4) _____ vegetables. What else do you eat every day?

Ben: I eat (5) _____ chocolate everyday.

Doctor: You need to eat (6) _____ chocolate. Do you eat fruits every day?

Ben: Yes, I eat two oranges a day.

Doctor: You need to eat (7) _____ types of fruit. For example, you can try (8) _____ strawberries and (9) _____ grapes.

Ben: I will keep it in mind. Thank you.



B Kim is talking to her grandma. Complete the dialogue with the correct form of the given words. (Tenses)

Grandma: (1) _____ you _____ (travel) to other countries in the coming summer holidays?

Kim: No, I (2) _____. I (3) _____ (stay) in Hong Kong. A friend from Japan (4) _____ (come) to visit me. She (5) _____ (visit) Hong Kong every year.

Grandma: Where (6) _____ you _____ (go) with her?

Kim: We (7) _____ (go) to Tsim Sha Tsui. We (8) _____ (not visit) the Peak because she (9) _____ (go) there last year.

Grandma: What (10) _____ you _____ (do) there?

Kim: We (11) _____ (watch) a ballet show at the Hong Kong Cultural Centre. I (12) _____ (buy) the tickets yesterday.

Grandma: (13) _____ you _____ (take) the ferry?

Kim: Yes, we (14) _____. She (15) _____ (like) looking at the view of Victoria Harbour.

C Harry is giving his friends some advice. Complete the advice with the correct form of 'need to' and the given words. (Giving advice)

1. Your books are due today. You _____ (return) them to the library.

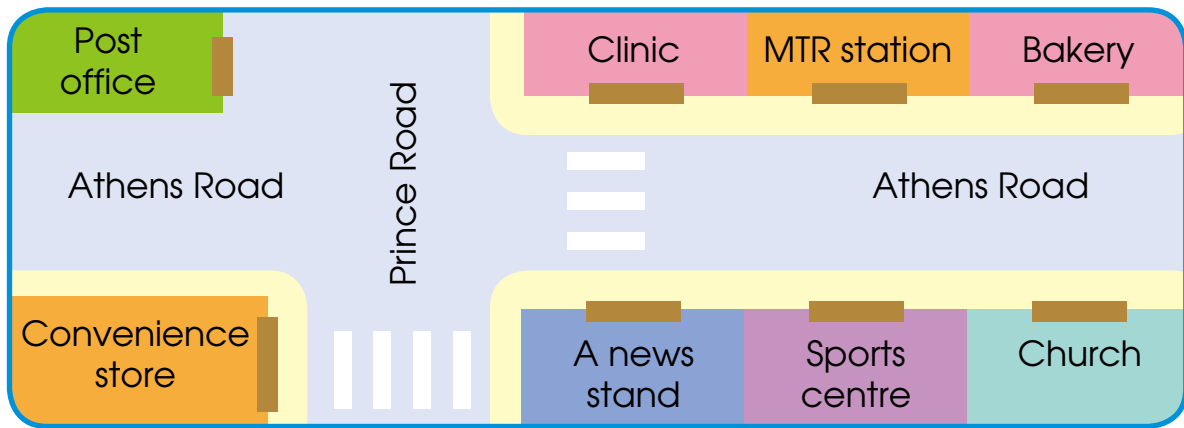
2. Jane looks tired. She _____ (take) a rest.

3. We are not good at English. We _____ (read) more English books.

4. John's trainers are dirty. He _____ (clean) them.

5. My room is a mess. I _____ (tidy) it up.

D Jack moved to another district yesterday. Look at the map and complete the dialogue with 'Where / How' and the correct directions.
(Question words, prepositions, giving directions)



Jack: (1) _____ can I find the sports centre?

Dad: It is (2) _____ to the church.

Jack: (3) _____ can I get to the sports centre from the convenience store?

Dad: Go (4) _____ the convenience store. Walk (5) _____ Prince Road. Turn left and go straight ahead. Turn (6) _____ Athens Road and walk straight ahead. The sports centre is (7) _____.

Jack: (8) _____ is the MTR station?

Dad: It is (9) _____ the sports centre.

Jack: After I play badminton at the sports centre, (10) _____ do I get to the MTR station?

Dad: Turn (11) _____ after you go out of the sports centre. Go (12) _____. Turn right and (13) _____ Athens Road. Turn (14) _____ again and walk straight ahead. The MTR station is (15) _____.

Final Revision (Units 1 - 18)



Date: _____

A There is one mistake or one missing word in each question. Circle the mistake and write the correct word in the blank. (All units)

e.g. You need to eat fewer sugary food. less

1. There is too many pork. I can't eat it all. _____

2. Emma is going to seeing the Big Buddha. _____

3. He has a few spaghetti for dinner every day. _____

4. I go to the post office one a week. _____

5. How often are you watch TV? _____

6. He oughts to change his dirty facecloth. _____

7. How tall is the running track? It is 600 metres. _____

8. Will you doing exercise next Thursday? _____

9. Where do I get to the clinic? _____

Turn right and the clinic is on your right.

B Bob is asking Ella some questions. Complete the dialogue with the correct 'How' question words. (Question words: 'How' questions)

Bob: (1) _____ is the mountain near our school?

Ella: It is 189 metres.

Bob: (2) _____ is the school building?

Ella: It is 20 metres.

Bob: (3) _____ is the statue?

Ella: It is 30 kilograms.

Bob: (4) _____ is the banner?

Ella: It is 70 centimetres.